

# [Issue Descriptions]: WIN-CAN CANBUS Test SOP

1. After installation is completed, execute WIN CAN.
2. If your PC has been detected CANbus (It will show out like picture 1), choose the device and set BaudRate.

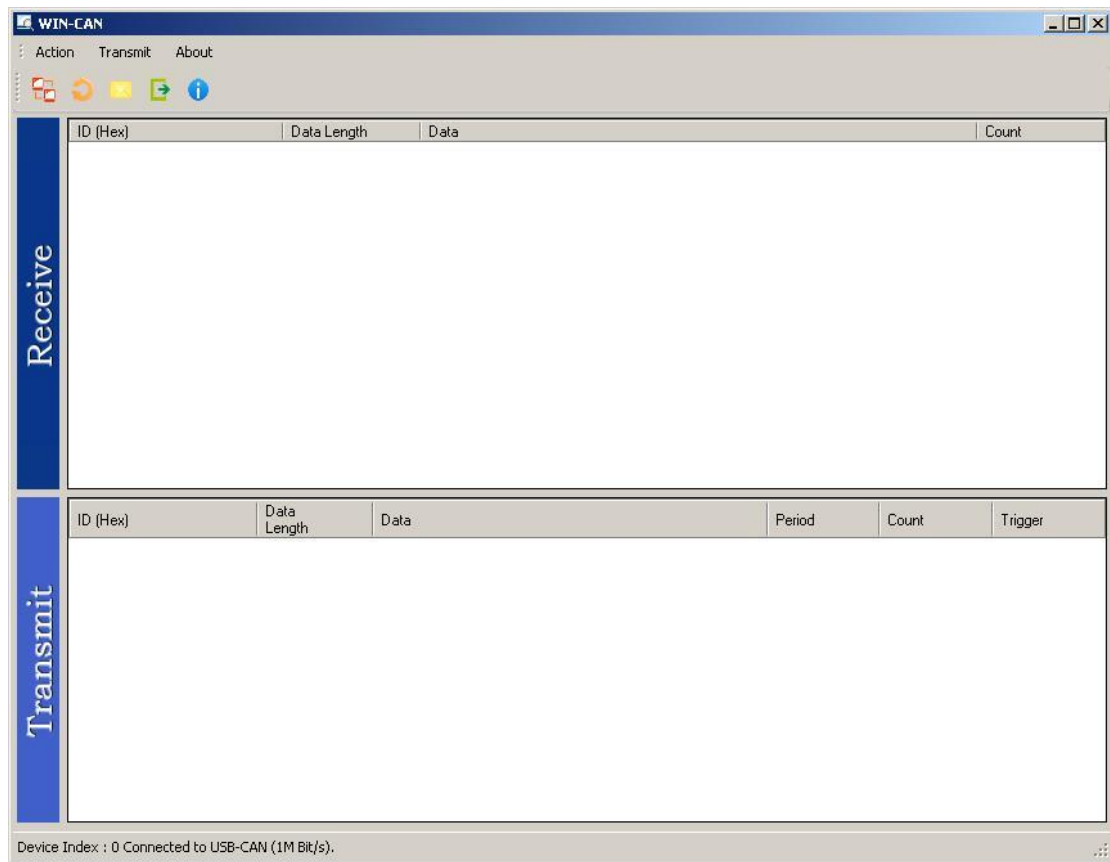


(Picture 1)

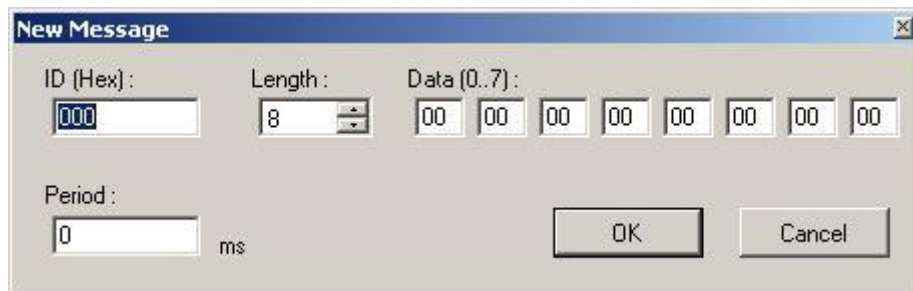
3. After execute the software, you will see the view like picture 2.

If you want to set transmission, right click on transmit and choose NEW to add new transfer data

like picture 3.



(Picture 2)



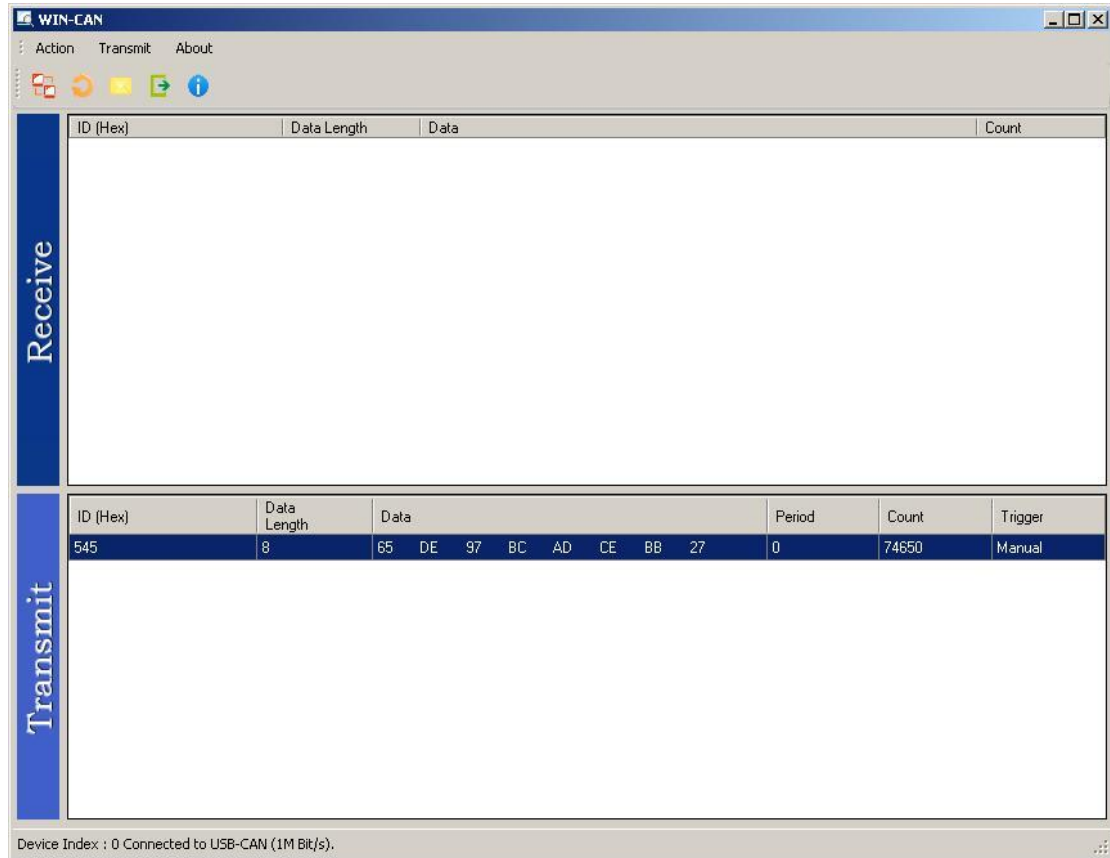
(Picture 3)

4. ID(HEX) : Set the ID to transfer.

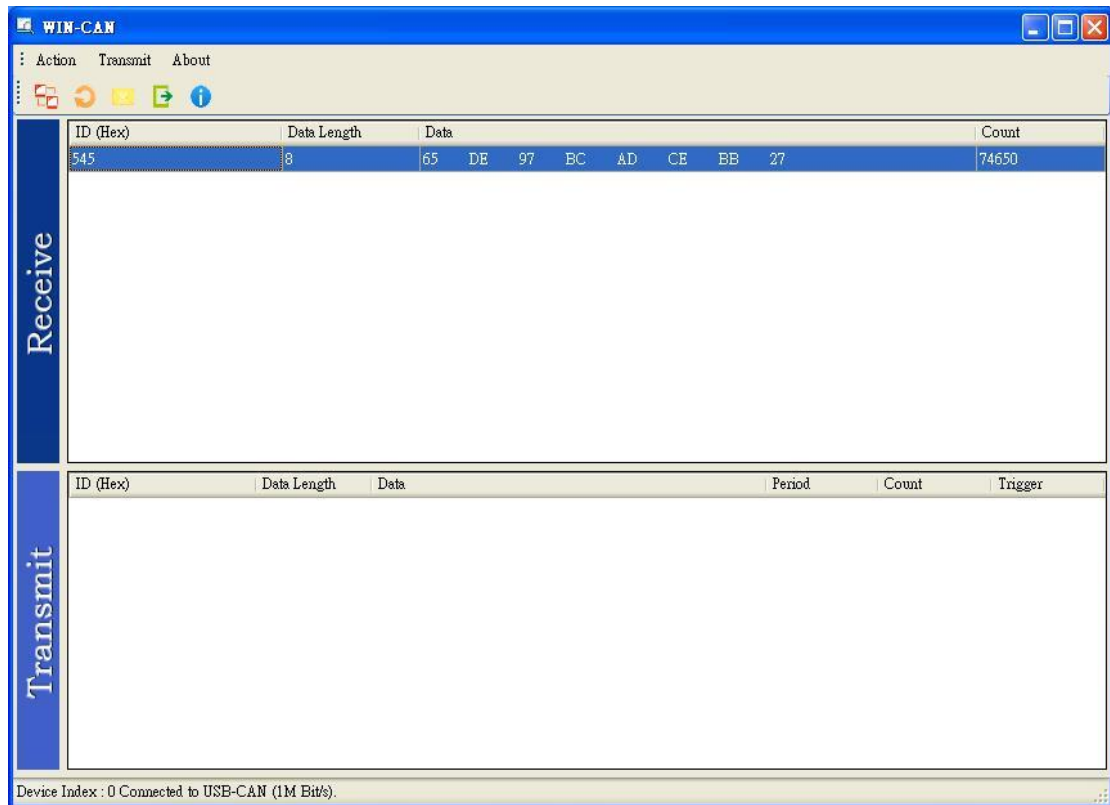
Length : The maximum Data Length is 8.

Date(0..7) : The Data should be Hexadecimal System.

Period :After setting the above elements, define the Period to finish the transfer.



(Picture 4)



(picture 5)

7. After verify for a long period of time, check if there's some misinformation or stop, and make sure all the information you set are correct.